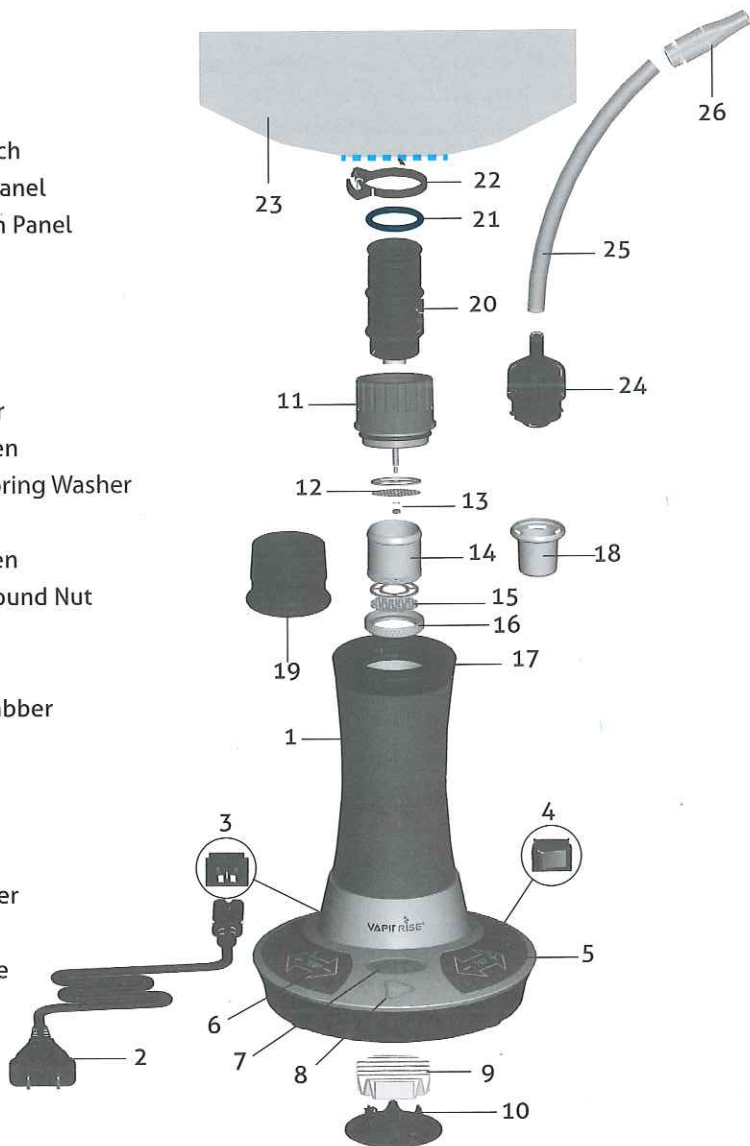


Identifying the Parts

- 1- VapirRise® Unit
- 2- Power Cord
- 3- Power Cord Input
- 4- ON/OFF Main Switch
- 5- Fan Speed Touch Panel
- 6- Temperature Touch Panel
- 7- LCD Display
- 8- Heat Button
- 9- HEPA Air Filter
- 10- Filter Cover
- 11- Chamber Adapter
- 12- Small Mesh Screen
- 13- Plunger Nut & Spring Washer
- 14- Herb Chamber
- 15- Large Mesh Screen
- 16- Herb Chamber Round Nut
- 17- Heat Chamber
- 18- Oil Chamber
- 19- Hot Chamber Grabber
- 20- Balloon Adapter
- 21- Blue O-Ring
- 22- Balloon Clamp
- 23- Balloon
- 24- Inhalation Adapter
- 25- Silicon Tube
- 26- X-Tip Mouthpiece



Safety Mechanisms

ENG

- **If Heating Element is engaged:** The VapirRise® safety feature will automatically turn off the heating element and fan after 20 minutes. You can re-engage either process at any time by utilizing the touch panel.
- **If Heating Element is not-Engaged:** The VapirRise® safety feature will automatically turn off the fan after 5 minutes. You can re-engage fan at any time by utilizing the touch panel.
- When the fan speed is set to zero it will discontinue both fan and heating process.

IMPORTANT: Located at the top of the VapirRise® are two air vents on the outside of the heating chamber. These vents must be kept open at all times or overheating may occur.

CAUTION: The appliance is only to be used with the recommended vaporizing medium. The use of other substances may give rise to a toxic or fire risk.

Pre-Usage Instructions

- Prior to using the tube attachment make sure to soak it in warm water.

TIP: DO NOT USE BOILING WATER

- Located within the box are two individually wrapped HEPA Air Filters, one for usage and a second for replacement. Prior to using your VapirRise® make sure to install the HEPA Air Filter by opening the Filter Cover and inserting a new filter.
- It is recommended the HEPA Air Filter be removed and replaced periodically to ensure maximum filtration and airflow.
- Temperature display can be changed from Fahrenheit to Celsius and vice-versa by holding your finger on the Heat Button until the temperature unit is changed.

Fan Speed Chart:

Fan Speed Chart	
Fan Speed Level	Application
0 (OFF)	This will turn both your fan and heat OFF
1-5	Recommended for Direct Inhalation
6-9	Recommended for Balloon Inflation

Preparing to Vaporize

ENG

- Plug in your VapirRise® and power on the unit.
- Grind your herbs very finely .

TIP: Vaporization is most effective with finely ground herbs.

- Insert ground up herbs into the Herb Chamber.
- Gently push together pre-filled Herb Chamber and Chamber Adapter by securely snapping into place (Figure-01).
- With the Herb Chamber and Chamber Adapter securely assembled, push the Plunger down to fully compact the herbs.
- Utilizing Temperature Touch Panel, set the desired temperature, a good median range to begin with is between 350-380 F (Figure-02).

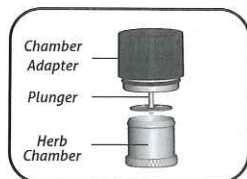


Figure-01



Figure-02

TIP: If you are getting smoke turn the temperature down & if you are not getting enough flavor, turn the temperature up. This process will help you to find your preferred temperature.

- Begin heating process by touching the Heat Button which will illuminate red to indicate heating has begun.

TIP1: The fan will automatically revert to Setting 2 while the unit is heating to reach desired temperature more efficiently. Once the unit has reached the desired temperature you can adjust the fan speed.

TIP2: Once the unit has reached the desired temperature, the red backlight on Heat Button will switch to green to indicate the unit is ready for usage.

Inflation Assembly

- Remove the Blue O-Ring from the Balloon Adapter (Figure-03).
- Place the Blue O-Ring around the open end of the balloon and roll at least 1 inch up (Figure-04).
- Insert Balloon Adapter into balloon opening and roll the O-Ring into place on the upper groove of the adapter (Figure-05).
- Fold excess balloon material up and over the Blue O-Ring.
- Once the balloon is secured with the Blue O-Ring, squeeze Balloon Clamp around Balloon Adapter to secure balloon and prevent vapor loss (Figure-06).

TIP: To remove Balloon Clamp push clamp teeth in opposite directions until disconnected (Figure-07).

- Secure Balloon Adapter to the fully assembled Chamber Adapter by twisting counter-clockwise.
- Inflation Assembly is now ready for use (Figure-08), proceed next section, **Inflating a Vapor Balloon**.

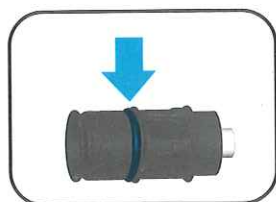


Figure-03

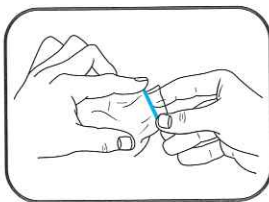


Figure-04

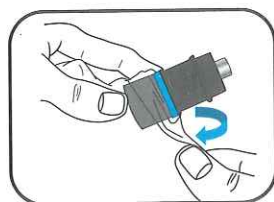


Figure-05

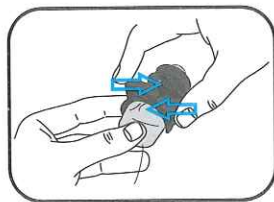


Figure-06

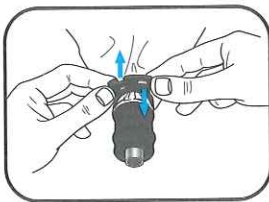


Figure-07

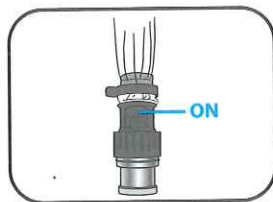


Figure-08

Inflating a Vapor Balloon

ENG

- Prior to utilizing the Balloon Inflation function, please take the time to review sections: [Preparing to Vaporize \(Page 6\)](#) & [Inflation Assembly \(Page 7\)](#).
- Prior to inflating the balloon, make sure the Balloon Adapter valve is in the "ON" position. [\(Figure-09\)](#).

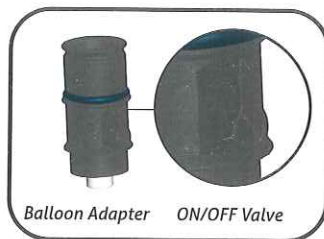


Figure-09

- Insert Inflation Assembly into the pre-heated Heat Chamber by twisting clock-wise until secure.
- Set the desired fan speed and balloon should automatically begin to inflate.

TIP: [Fan Settings 6-9](#) is recommended for balloon inflation.

- Once balloon is inflated, press the Heat Button to disengage heat and turn Balloon Adapter valve to the "OFF" position to eliminate vapor loss.
- Remove the Inflation Assembly from the Heat Chamber by twisting counter-clockwise.
- Take apart Inflation Assembly by twisting Balloon Adapter counter-clockwise to remove from Chamber Adapter.

TIP: While disconnecting the Balloon Adapter do not touch any exposed metal as you will risk injury. It is recommended you always utilize the Hot Chamber Grabber to manipulate the Herb Chamber at any time to avoid injury.

- Attach the Inhalation Adapter to the Balloon Adapter by firmly pressing together until secure.
- Turn the valve to the "ON" position to inhale and enjoy!

Direct Inhalation

- Prior to utilizing the Direct Inhalation function, please take the time to review the section: [Preparing To Vaporize \(Page 6\)](#).
- Attach full length tube to the Inhalation Adapter and X-Tip Mouthpiece to the tube (if preferred).

TIP: You can always cut the tube to your preferred length.

- Insert the Inhalation Adapter into the pre-assembled Chamber Adapter and secure by gently twisting clock-wise ([Figure-10](#)).
- Insert pre-assembled Chamber Adapter (with attached Inhalation Adapter) into the pre-heated Heat Chamber by twisting clock-wise until secure.
- Set fan to desired speed to inhale and enjoy!

TIP: [Fan Settings 1-5](#) is recommended for direct inhalation.

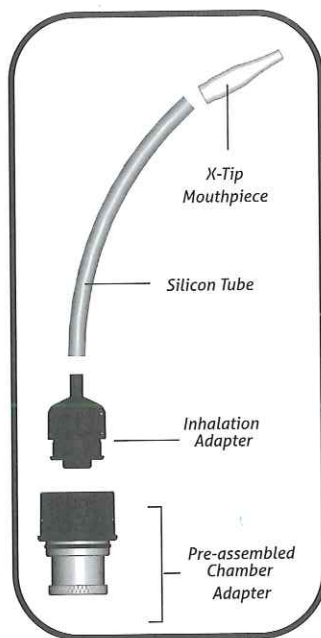


Figure-10

Aromatherapy Instructions

ENG

Aromatherapy utilizes essential oils in a range of treatments designed to promote the well-being of mind, body and spirit. Only 100% pure essential oils are derived completely from plants and recommended for usage with aromatherapy. The VapirRise® comes with an Aromatherapy Oil Chamber to create your own aromatherapy sessions.

- While the unit is heating up place a few drops of Pure Essential Oil into the Aromatherapy Oil Chamber.

TIP: The more essential oil used, the more intense and longer lasting the aromatherapy session.

- Gently push together Oil Chamber and the Chamber Adapter by securely snapping into place (Figure-11).
- Once the unit has reached desired temperature, insert the fully assembled Chamber Adapter into the pre-heated Heat Chamber by twisting clock-wise until secure.
- Set preferred fan speed for a more or less intense aromatherapy session.

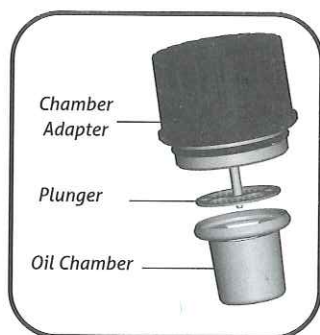


Figure-11

Maintenance & Cleaning

The VapirRise® comes with two pre-installed mesh screens which should be replaced when soiled for optimal performance.

Replacing Large Mesh Screen (Figure-12):

- The larger mesh screen come pre-installed at the bottom of the Herb Chamber. To remove this mesh screen, unscrew the bottom round nut of the Herb Chamber. Once the round nut is removed the mesh screen is now accessible to be cleaned or replaced.
- To replace the mesh screen, lay the screen flat onto the bottom round nut and the holding washer on top of the screen. Secure the bottom round nut to Herb Chamber.

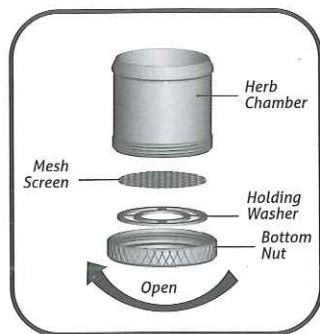


Figure-12

Replacing Small Mesh Screen (Figure-13):

- The smaller mesh screen is located on the Plunger of the Herb Chamber. Using a pair of needle nose pliers, gently unscrew the small nut at the bottom of the plunger and remove the mesh screen to be cleaned or replaced.
- To install a new mesh screen, place a screen at the bottom of the plunger while ensuring the guiding hole in the middle lines up with the plunger shaft. Replace nut until secure.

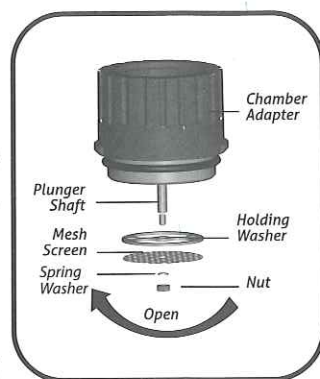


Figure-13

Cleaning Your VapirRise®:

It is strongly recommended that both mesh screens are kept clean at all times. Replacing mesh screens periodically allows for maximum airflow and optimal performance. Periodically cleaning your VapirRise® is also recommended. Lightly moisten a Q-Tip with rubbing alcohol to clean soiled areas.

TIP: Be sure not to put too much rubbing alcohol on the Q-Tip as excess moisture can damage internal components.

Accessories & Replacement Parts

ENG

Accessories:

- 5 Pack of Inflation Balloons
- 3 Pack of HEPA Air Filter
- 10 Pack of Mesh Screens (5x Large & 5x Small)
- 3 Pack of Tubes
- 10 Pack of X-Tip Mouthpieces

VapirRise® Replacement Parts:

- Chamber Adapter (Including Plunger)
- Inhalation Adapter
- Herb Chamber
- Balloon Adaptor with ON/OFF Valve
- Balloon Adapter Clamp
- Balloon Adapter O-Ring
- Chamber Adapter O-Ring
- Aromatherapy Oil Chamber

- 4-User Adapter:

NEW Optional Accessory Exclusive to the VapirRise® Vaporizer!

This new and innovative accessory allows you to enjoy your VapirRise® direct inhalation feature with up to 4 people at once!



Figure-14

Replacement parts for this unit can be purchased directly from our website www.vapir.com or by calling 1.800.841.1022.

Additional Information

Suggested Vaporizing Temperatures:

Clove: (125C to 150C) 257F to 302F
Dandelion: (125C to 150C) 257F to 302F
Lavender: (100C to 125C) 212F to 257F
Peppermint: (100C to 150C) 212F to 302F
Sage: (125C to 150C) 257F to 302F
Saw Palmetto: (125C to 175C) 257F to 347F
Cats Claw: (150C to 175C) 302F to 347F
Damiana: (150C to 175C) 302F to 347F
Garlic: (170C to 185C) 337F to 365F
Ginger: (170C to 185C) 337F to 365F

Warranty Information:

Vapir stands behind their products and customers; your VapirRise® is covered under warranty for 1 year against any manufacturing defects. Warranty registration should be completed within 14 days of receiving your vaporizer. To register your warranty, please go to www.vapir.com/warranty.

If you are interested in purchasing an extended warranty, you can call Vapir Customer Service at 1.800.841.1022 Mon-Fri 9am-5pm PST.

Disclaimer: All Vapir Vaporizers are intended for legal usage only. Vapir makes no claims about any health risks associated with smoking or vaporizing. Vaporizing may not remove all health risks associated with smoking. If you are unsure about any health risks associated with smoking or vaporizing please consult your doctor prior to using a vaporizer. Vaporize at your own risk.