

NEVER LEAVE YOUR VAPIRRISE® UNATTENDED & DO NOT TOUCH HOT SURFACES AT ANY TIME (For Further Safety Mechanisms Refer to Page 4 of User Guide)

A. PRE-USAGE & SAFETY RECOMMENDATIONS:



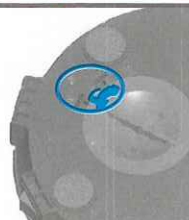
A1. CAUTION:
High Temperature



A2. Always Use Hot Chamber
Grabber w/ ANY Hot Surface



A3. Unwrap HEPA
Filter & Install



A4. Secure
Filter Cover into
Lock Position

B. PREPARING TO VAPORIZE:



B1. Finely Grind
Your Herbs



B2. Fill Herb Chamber
¼ Full or Less



B3. Securely Snap Your
Herb Chamber into place



B4. Push Down
Plunger to
Compact Herbs



B5. Power on
VapirRise®



B6. Set the
Temperature

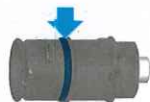


B7. Engage Heat

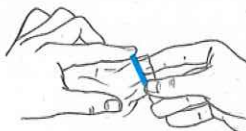


B8. Green Light =
Ready to Vaporize

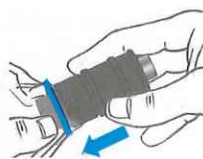
C. INFLATION ASSEMBLY:



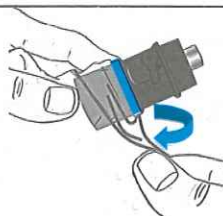
C1. Remove
Blue O-Ring



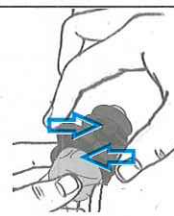
C2. Place O-Ring
Around Balloon
Opening



C3. Insert Balloon
Adapter into
Balloon Opening



C4. Roll O-Ring into
Upper Groove and
Fold Excess Balloon



C5. Squeeze
Balloon Clamp
Around Balloon



C6. Connect
Balloon Adapter



C7. Move Balloon
Valve to ON -
Inflation Assembly

NEVER LEAVE YOUR VAPIRRISE® UNATTENDED & DO NOT TOUCH HOT SURFACES AT ANY TIME (For Further Safety Mechanisms Refer to Page 4 of User Guide)

D. INFLATING A VAPOR BALLOON:



D1. Insert Inflation Assembly into Heat Chamber



D2. Set Fan Speed (Level 6-9)



D3. When Balloon Inflated, Turn Heat Off



D4. Move Balloon Valve to OFF



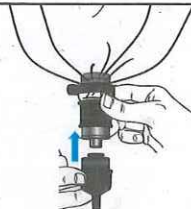
D5. Remove Inflation Assembly



D6. Put Inflation Assembly into Hot Grabber



D7. Remove Balloon Adapter from Inflation Assembly



D8. Attach Inhalation Adapter



D9. Move Balloon Valve to ON... Inhale & Enjoy!

E. DIRECT INHALATION:



E1. Attach Tube & Mouthpiece to Inhalation Adapter



E2. Insert Inhalation Adapter into Herb Chamber



E3. Green Light = Ready to Vaporize



E4. Insert Pre-Assembled Chamber Adapter

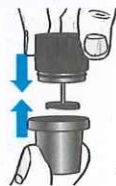


E5. Set Fan Speed (Level 1-5)... Inhale & Enjoy!

F. AROMATHERAPY:



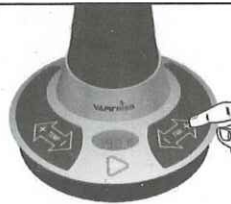
F1. Drip Essential Oil into Oil



F2. Securely Snap Your Oil Chamber



F3. Insert Pre-Assembled

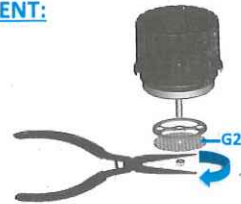


F4. Set Fan Speed (Level 1-9)

G. MESH SCREEN REPLACEMENT:



G1. LARGE SCREEN: Access screen by



G2. SMALL SCREEN: Access screen by removing